

Designed for Maximum Effort engines, all SS (Sport Series) crankshafts are finished with the same care and detail as the entire line of Compstar crankshafts. All SS cranks are sold balanced and ready for assembly. SS crankshafts by Compstar feature the best metallurgy and heat treatment on the market today.



Sport Series (SS) connecting rods are available with either ARP 2000 or Custom Age 625 bolts for High Output applications. All Sport Series rods are H-beam design machined from fine grained 4340 steel.

Honda B Series

Average weight 30 lbs.

Standard Features

- B18 Strokes available 87.2, 89, 92, 95 mm
- 8 counterweight design
- 4340 steel certified by Callies in house Metallurgical lab
- Ultra-Case nitriding performed and certified by Callies
- Rod and main journal surface finish refined to 4Ra or less
- All journals ground with strength enhancing Tru-Form radii
- Limited stroke availability
- Aeroshed finishing optional

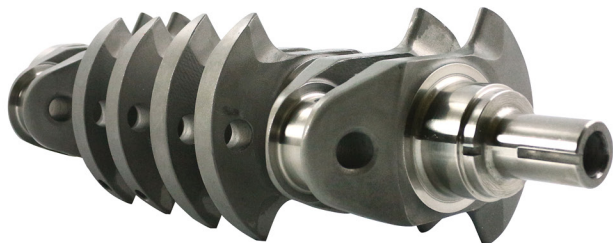
Honda B18 Billet

Stroke:	Main:	Pin:	Part #
95mm	55mm	45mm	S22002



Honda B18 Full Counterweight

Stroke:	Main:	Pin:	Part #
87.2mm	55mm	45mm	S22008
89mm	55mm	45mm	S22009
92mm	55mm	45mm	S22001



Honda K Series

Stroke:	Main:	Pin:	Part #
90.7mm	55mm	45mm	S22003
99.9mm	55mm	45mm	S22004
106mm	55mm	45mm	S22005
102mm	55mm	45mm	S22006

Honda K Series

Average weight 33 lbs.

Standard Features

- Strokes 90.7, 99.9, 102 & 106 mm
- Fully Counterweighted Design
- 4340 steel certified by Callies in house Metallurgical lab
- Ultra- Cryo treatment performed in house at Callies
- Ultra-Case nitriding performed and certified by Callies
- Rod and main journal surface finish refined to 4Ra or less
- All journals ground with strength enhancing Tru-Form radii
- No Drill internal balance
- Aeroshed finishing optional

Honda F Series

Average weight 37 lbs.

Standard Features

- Strokes available 84 mm
- 8 counterweight design
- 4340 steel certified by Callies in house Metallurgical lab
- Ultra-Case nitriding performed and certified by Callies
- Rod and main journal surface finish refined to 4Ra or less
- All journals ground with strength enhancing Tru-Form radii
- Limited stroke availability
- Aeroshed finishing optional



Honda F Series

Stroke:	Main:	Pin:	Part #
84mm	55mm	45mm	S22007
90.7mm	55mm	45mm	S22010

Honda Ultra Enforcer Connecting Rod

Length	Journal	Pin	Part #
5.655" / 144mm	2.008" / 51mm	0.867" / 22mm	U16800

Honda K24 SS Connecting Rod H-Beam

Length	Journal	Pin	Part #
5.985" / 152mm	2.008" / 51mm	0.866" / 22mm	C22104
5.985" / 152mm	2.008" / 51mm	0.866" / 22mm	C22104-CA

Honda K20 SS Connecting Rod H-Beam

Length	Journal	Pin	Part #
5.472" / 138mm	2.008" / 51mm	0.866" / 22mm	C22105
5.472" / 138mm	2.008" / 51mm	0.866" / 22mm	C22105-CA

Honda B16 SS Connecting Rod H-Beam

Length	Journal	Pin	Part #
5.291" / 134mm	1.890" / 45mm	0.827" / 21mm	C22101
5.291" / 134mm	1.890" / 45mm	0.827" / 21mm	C22101-CA

Honda B18C SS Connecting Rod H-Beam

Length	Journal	Pin	Part #
5.433" / 138mm	1.890" / 45mm	0.827" / 21mm	C22102
5.433" / 138mm	1.890" / 45mm	0.827" / 21mm	C22102-CA

Honda B18 A/B & B20 SS Connecting Rod H-Beam

Length	Journal	Pin	Part #
5.394" / 137mm	1.890" / 45mm	0.827" / 21mm	C22103
5.394" / 137mm	1.890" / 45mm	0.827" / 21mm	C22103-CA



4 Piston Racing - OGS All Motor World Record
Compstar 99.9 mm K Series Crankshaft